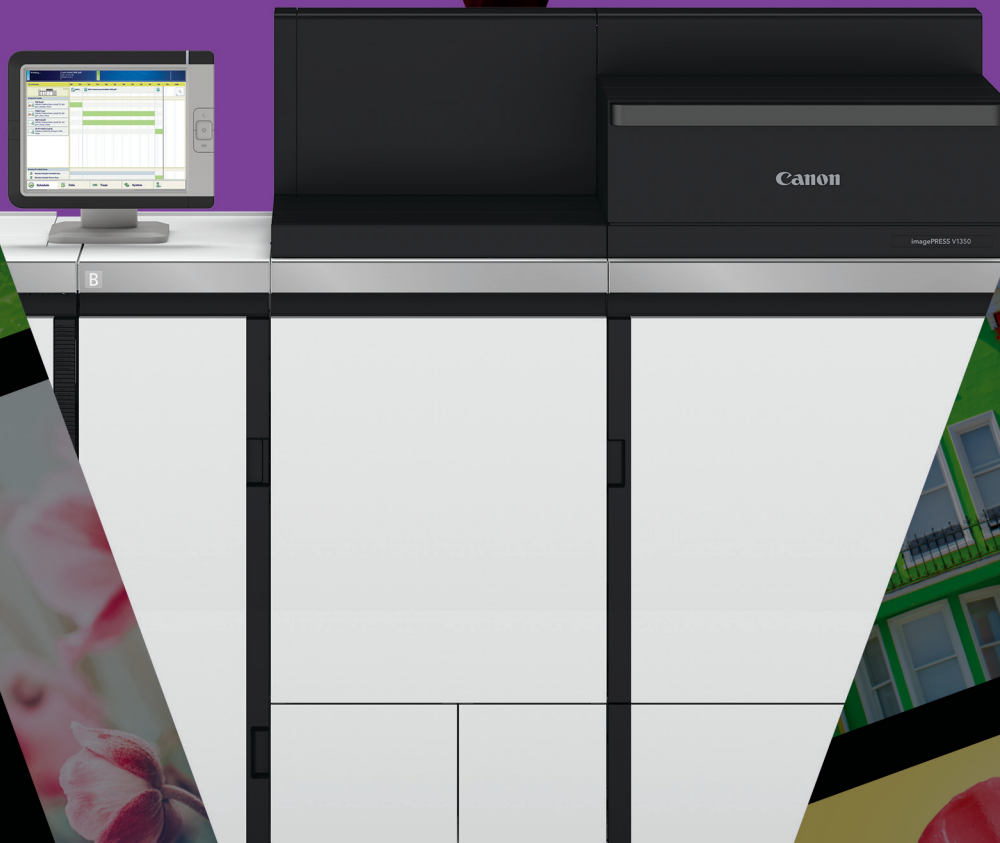


Canon

imagePRESS V1350

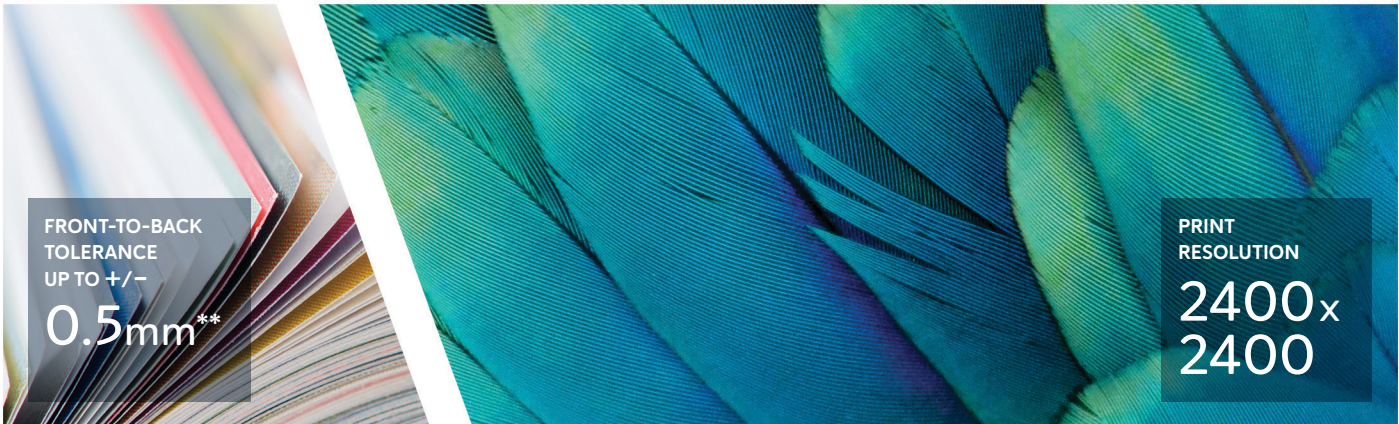
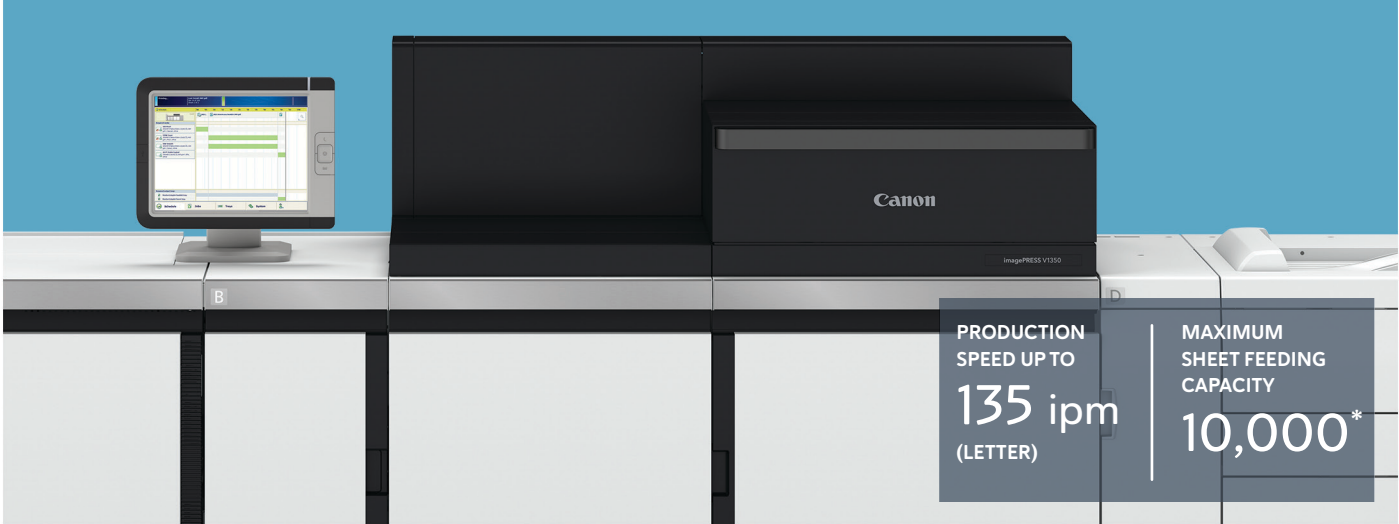
COLOR PRODUCTION  
DIGITAL PRESS



Brilliant Vision. Inside and Out.

# imagePRESS V1350

Introducing the imagePRESS V1350 digital press.  
Robust output and productivity with solid stability.



\* Capacity based on 20 lb. Bond.  
\*\* Stocks up to 13" x 19.2".  
• Optional accessories required.

## Designed with commercial printing in mind.

Consistently producing beautiful prints on time and within budget is no small task. That's why you need a partner with vision.

Say hello to the imagePRESS V1350 digital press. This high-volume, color production digital press offers a seamless combination of powerful print productivity and labor-saving automation technology, and it's been designed to help produce beautiful, accurate prints fast, easy, and efficiently.

Canon technology can work to quickly and efficiently produce offset-quality output and incredible repeatability. This flagship imagePRESS printing solution is designed to deliver astonishing print speeds of up to 135 ipm. The Active Registration Technology keeps paper aligned and moving through the press fluidly, minimizing downtime. Inline Spectrophotometers (ILS) can help operators to quickly produce repeatable, accurate color at the push of a button. The flat and stable paper path combined with the steel frame helps contribute to a press that's durable and reliable day in and day out. Plus, all this comes with expanded support for printing on a wide variety of medias up to 170 lb. Cover.

At the core of the imagePRESS V1350 are powerful technologies that can help your operation run efficiently. This workhorse is designed to deliver outstanding results that will not only exceed your customers' expectations, but keep them coming back for more.



**Lightning-Fast Print  
Speed up to 135 ppm**



**Extensive Support  
for Rigid Stocks**



**Automated Self-Adjusting  
Color and Registration**



**Dependable and  
Stable Operation**



imagePRESS V1350 shown with optional accessories.

# Powerful productivity. Magnificent quality.

The imagePRESS V1350 offers a synergy of advanced print technologies designed to produce brilliant output efficiently, accurately, and effortlessly.

## Outstanding Productivity

### Boost your output

Turn jobs around quickly with lightning-fast print speeds of up to 135 ipm (Letter) with POD-SURF (Surface Rapid Fusing) Technology. The ILS allow operators to rapidly profile medias with the push of a button and, once running, the core imaging, color, and registration technologies take over, making real-time adjustments while maintaining high productivity throughout the run.

### Expand your horizons

Offer customers more with expanded support for a spectrum of media, including thick, coated, and specialty stocks. The imagePRESS V1350 can easily handle a wide variety of jobs, from mixed media booklets and market collateral jobs to direct mail and light packaging work, all on stocks up to 170 lb. Cover and with brilliant color and clarity. Expand your horizon and easily grab the attention of the reader with the ability to print on large-size envelopes, labels, synthetic, and embossed stocks.

### Minimize downtime

Vacuum Feed and Air Separation help to ensure your stocks are reliably fed into the press. Double-Sheet Detection\* automatically diverts these jam-prone pages to a dedicated purge tray, without stopping the press or requiring operator attention.

The Active Registration System utilizes a steel side plate to help keep paper aligned correctly and provide tight and consistent registration.

And media is kept running smoothly through the press with a flat paper path and Canon's Media Conditioning Technology, which minimizes curl, exiting the press neatly stacked and ready for finishing.

### Free up your staff

These advanced technologies combine to help keep your presses running fluidly, save you time, reduce waste, and free up operators so work can get out the door fast and efficiently.

\* POD Deck-EI required.



## Durable. Reliable. Stable.

The imagePRESS V1350 is not just a productive press. Canon analyzed many areas of the engine to help ensure that image quality and dependability remain at a high level.

⇒ *Flat, Stable Paper Path*

✂ *Reinforced Units*

⌋ *Strong Steel Frame*

🕒 *High Part Life*

## Superb Color and Image Clarity

### Keep quality under control

Canon develops advanced print technologies that can help you produce brilliant color and keep it stable throughout production runs. While the ILS offer automation to color calibration, media profiling, and verification processes, Multi D.A.T. takes over during production by automatically measuring a range of highlight-to-shadow density patches between each sheet for real-time color correction. Then let the optional Sensing Unit automate color accuracy checks, front-to-back alignment, and secondary transfer adjustments to help you achieve consistent output with brilliant color that's delivered easily and fast.

### Get the details right

Quality isn't about vibrant color alone; it's reflected in the clarity and detail of halftone images, vector artwork, and text. The 2400 x 2400 dpi print resolution and short wavelength of Canon's R-VCSEL Laser is a key piece, helping to keep curves smooth, raster images clean, and text looking crisp. The durable and long-lasting imaging drums and developer units also help to ensure that quality and clarity can remain at a high level.

### Stay consistent

Getting consistent results on a wide range of media can be challenging. The Advanced Image Transfer Belt presses the toner into the media, allowing toner to fill in the peaks and valleys of textured stocks. Repeatable, accurate color and high-density images are reliably produced for custom and premium applications. With the Translucent CV Toner, the surface properties of your media can shine through for consistent output that rivals offset printing.

### Stand out from the pack

The imagePRESS V1350 color production digital press has been engineered to perform in today's challenging commercial print marketplaces. You can have outstanding productivity and automation features, with brilliant image quality—and all with minimal operator involvement.



# The picture of productivity.



imagePRESS VI350 shown with optional accessories.

## Brilliant technology inside.

### Sensing Unit\*

With just the push of a button, the Sensing Unit sets up jobs to adjust color tone accuracy and front-to-back registration before printing. It can then help monitor and maintain these settings across a print run, continuously adjusting on the fly.

### ILS (Inline Spectrophotometers)

This technology performs advanced color adjustments such as engine linearization, media calibration, color profile creation, and color validation—all with a touch of your finger.

### Active Registration System

The combination of a steel side guide, front-edge detection, media positioning, and image timing sensors helps to produce tight and consistent front-to-back registration.

### Twin Sleeve Developer

Multiple grooved rollers apply toner to the imaging drum, helping to produce consistent, rich solids across each sheet.

### POD-SURF (Surface Rapid Fusing) Technology

An innovative fuser permits printing at speeds of up to 135 ppm (Letter) and high productivity on mixed-media jobs.

### R-VCSEL Imaging Laser

Canon's advanced 24-beam R-VCSEL Laser delivers 2400 x 2400 dpi print resolution, outputting detailed color images with outstanding definition at high speeds.

### Multi D.A.T.

Twenty (20) multi-gradation density patches are measured and corrected automatically during production, helping to provide consistent halftones.

### Paper Conditioner Technology

This prepares media for inline and offline finishing by minimizing curl to help preserve image quality and limit both jamming and reprints.

### Translucent CV Toner

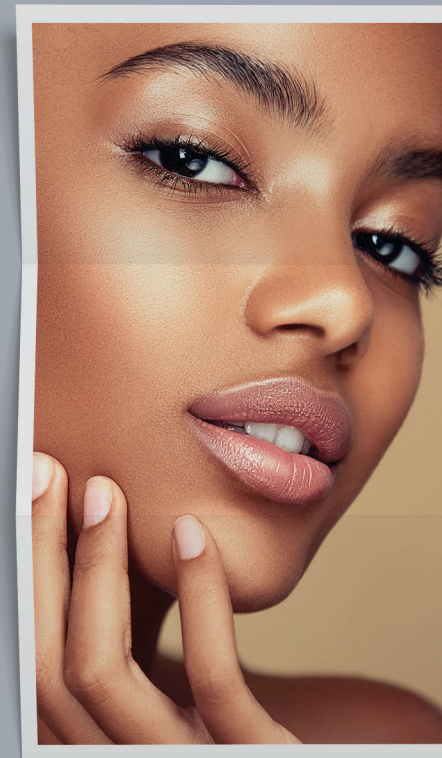
This helps produce consistent, vivid, and crisp images on a wide range of smooth and textured media with a realistic, offset-like finish.

### Advanced Image Transfer Belt

The durable, flexible surface assists with pressing the translucent CV Toner onto smooth and textured surfaces to help minimize mottling and produce brilliant output.



Brilliant results outside.



### Vacuum Feeding

This helps provide reliable feeding of heavy and coated paper, which aids in reducing potential misfeeds and downtime while printing.

### POD Deck\*

These vacuum-fed trays have a combined capacity of 9,000 sheets, allowing jobs to run with minimal interruption.

### Double-Sheet Detection with Purge Tray\*

An ultrasonic sensor detects air between sheets and, when detected, diverts the sheets to the top escape tray to help maintain throughput.

\* Optional.  
▪ Capacity based on 20 lb. Bond.  
♦ POD Deck-EI required.

# Powerful, intuitive tools that can deliver amazing results.

High performance and remarkable efficiency are yours with the PRISMAsync print server's impressive color tools and G7® grayscale calibration.

## PRISMAsync Print Server

Canon's PRISMAsync print server can help boost production capacity and lower costs. It helps deliver high-performance, deadline-driven printing that can assist with growing your business and nurturing successful relationships.

The **PRISMAsync Automated Color Task** feature combines multiple color setup functionalities into a single action. The ILS allow for automated press linearization, G7® media calibration and profile creation, and verification procedures to be done quickly and easily for hands-off automation.

**Embedded in-RIP G7® calibration** utilizes the ILS to allow operators to calibrate, profile, and verify the colors of the imagePRESS V1350 digital press to help achieve a near-neutral print condition quickly and easily.

**Pixel Precise Preview** adds flexible color-correction capabilities, such as CMYK curve editing and digital moiré reduction with immediate visual feedback.

**PRISMAsync Remote Manager** allows you to monitor multiple presses and edit job properties, manipulate color curves, manage queues, and submit and reroute print jobs.

**Job Scheduler** helps you manage your daily workload with up to eight hours of plan-ahead production. It displays the completion time of jobs and alerts you when interventions for media, toner, or staples are upcoming. The visual interface also makes prepress and production tasks clear.

The **PRISMAlytics Dashboard** puts recorded press data at your fingertips. This helps reduce turnaround time, waste, and costs by giving you access to detailed information on your usage, production, and consumption.





# Efficiently manage prepress and color with flexible workflows.

The Fiery® print server's easy-to-use, familiar interface and smart color-management technology offer endlessly flexible solutions.

## imagePRESS Server E9000

Powered by the Fiery FS500 Pro system software and combined with the innovative Fiery HyperRIP feature, you can help improve the processing time for complex and graphic-intensive jobs.

The imagePRESS Server E9000 introduces new and upgraded technologies to familiar workflow and prepress features. Together, they further enhance the Fiery tools for workflow automation and advanced color management.

**Fiery's 1-Step Color Manager** allows users to calibrate and create a media profile for fast, easy, and reliable color management while **Zero Step Calibration** checks each job's paper calibration timer to recalibrate, if necessary, before printing. And the **imagePRESS ILS** can perform both these functions as well as initialize press linearization and Spot Pro Optimization.

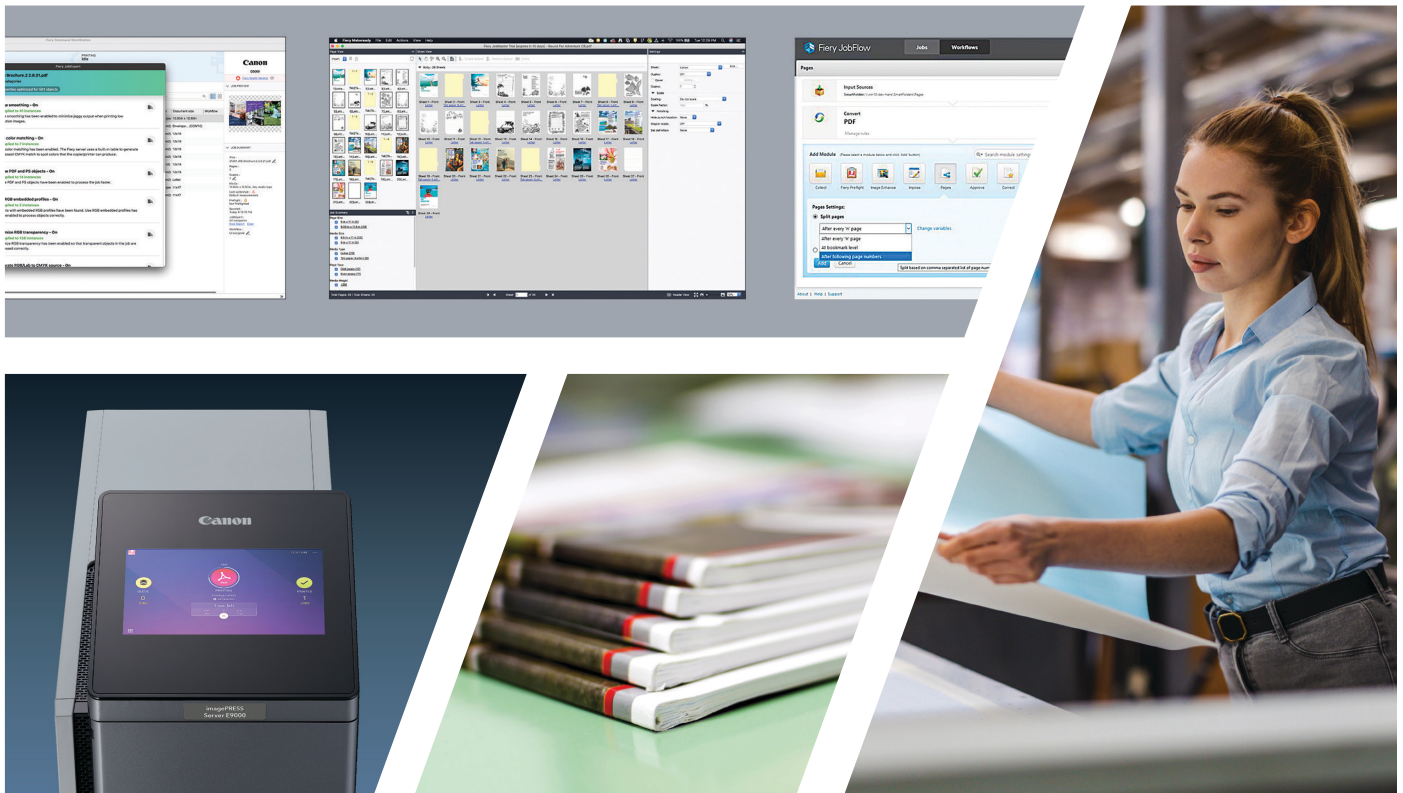
**Media Librarian**, Canon's sophisticated paper management application, creates, edits, and organizes paper stocks from a single, intuitive interface.

**Fiery Job Expert** analyzes incoming PDF files and dynamically chooses the ideal print settings to help achieve high print quality and optimize processing time.

**Fiery Preflight Pro\*** permits users to verify file compliance against many industry standards—and view warnings and error messages in an interactive report.

**Fiery JobFlow Base** automates job preparation steps in prepress workflows to help produce print-ready files quickly and easily, which can increase productivity and reduce costs.

\* Optional.



# Finish the job beautifully.

Now you can deliver professionally finished products with the strong, inline capabilities and extensive optional integrated solutions from Canon.

Help improve the efficiency of your existing finishing workflows with Canon's optional 6,000-sheet\* capacity stacker.

It's simple to produce a broad range of deliverables, including trifold brochures, saddle-stitched and perfect-bound booklets, direct mail, business cards, collateral and training materials, flyers, and posters.

Diversify your business by offering new and high-margin opportunities on attention-grabbing stocks such as rigid, coated, labels, textured, synthetic, oversize envelopes, and even long sheets.\*\*

## Finishing Options



### Document Insertion Unit

This module enables insertion of slip sheets or preprinted covers for booklets and complex jobs.



### Professional Punching and Creasing

The many die patterns offered for in-line hole punching (including double punching) and creasing help minimize toner cracking on the spines of saddle-stitched booklets.



### Perfect Binding

Using hot glue, this module binds covers to book-blocks of up to 200 pages\* and can trim on all three sides for full-bleed books or manuals.



### High-Capacity Stacking

Realize outstanding productivity with unload-while-run capability, helping to provide uninterrupted printing with stacking up to 6,000 sheets.\*



### Ring Binding

Use the GBC eWire Pro to automate the time-consuming process of wire binding manuals, booklets, and reports.



### Paper Folding

Offer promotional pamphlets, brochures, and more with the ability to produce Z-fold, C-fold, accordion fold, and double-parallel fold documents.



### Booklet Trimming

This helps maintain high productivity with a large-capacity trim waste bin and on-the-fly waste removal for continuous production. Modules can be combined with the Booklet Finisher to produce professional, full-bleed, square-bound booklets in-line.



### Professional Booklet-Makers

Deliver professional-looking, lay-flat booklets with speed and simplicity from Plockmatic for up to 200-page\* professional, square-folded, saddle-stitched booklets.

## Feeding Options



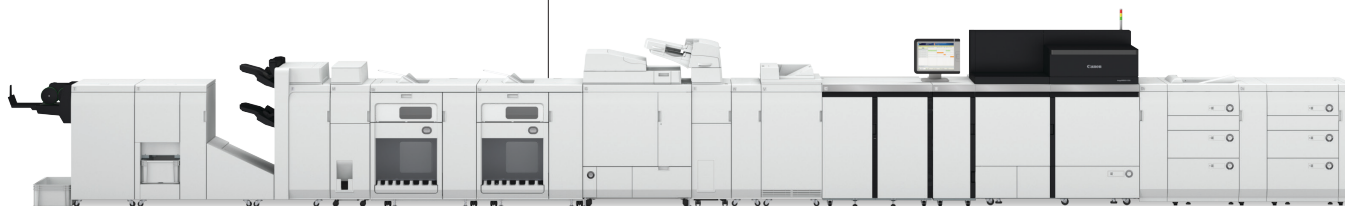
### POD Deck

Equipped with vacuum feeding and air separation, each drawer supports up to 13" x 19.2" and 170 lb. Cover. Up to two POD Decks can be attached, increasing the capacity to 9,000 sheets.\*



### BDT VX 370-790 Long-Sheet Feeder

This robust feeder is equipped with Tornado suction feeding and air-separation. It contains a single cart that supports up to 13" x 30" and 150 lb. Cover. The 5,000-sheet capacity\* allows jobs to run with minimal interruption.



imagePRESS V1350 shown with optional accessories.

\* Capacity based on 20 lb. Bond.

\*\* Optional accessories may be required.

# Canon and imagePRESS mean business.

Open up new possibilities for customer satisfaction with Canon U.S.A., a business partner you can count on for innovative printing solutions.

## Empower Your Printing with PRISMA

As a commercial print service provider, you strive to deliver a personal, flexible, and efficient value-added service while offering a broad range of print products, regardless of run-length. Such a balance demands efficient workflow management and the ongoing monitoring and control of press performance, wherever you are.

PRISMA Home\* is the portal at the heart of PRISMA cloud applications. It provides central and unified access to your PRISMA cloud-connected workflow applications and those tools used for monitoring and controlling press performance. With PRISMA Home, you can leverage multiple engines at once from compatible PRISMA cloud applications and access your critical data 24/7 from virtually anywhere.

## Team Up with a Visionary Leader

The imagePRESS VI350 color production digital press gives you the power to automate key tasks while maintaining the highest quality needed to help transform your business through high efficiency and flexibility. With 80-plus years of experience in designing and developing innovative imaging technology, Canon is constantly developing new solutions and refining its offerings to help your business maintain and increase its success. Together, we can help inspire your customers, improve your productivity, and enrich your operation's offerings. Canon's vision, realized through superb advances in technology, can help put your business on the path to a brighter future.



Discover More:  
[usa.canon.com/productionprinting](https://usa.canon.com/productionprinting)

\* Separate purchase required.

# imagePRESS V1350

## Specifications

<b>Print Speed (Simplex/Duplex)</b>	<b>Letter</b>	Up to 135 ipm
	<b>11" x 17"</b>	Up to 76 ipm
	<b>12" x 18"</b>	Up to 72 ipm
	<b>13" x 19"</b>	Up to 69 ipm
<b>Print Resolution</b>	<b>Maximum</b>	2400 x 2400 dpi
<b>Paper Capacity</b>	<b>Standard</b>	Up to 1,000 Sheets
	<b>Maximum</b>	Up to 10,000 Sheets
<b>Paper Size</b>	<b>Standard</b>	7.2" x 7.2" to 13" x 19.2"
	<b>Optional</b>	7.2" x 7.2" to 13" x 30"
<b>Paper Weight</b>		16 lb. Bond to 170 lb. Cover
<b>Automatic Duplexing</b>	<b>Standard</b>	7.2" x 7.2" to 13" x 19.2"
	<b>Optional</b>	7.2" x 7.2" to 13" x 30"
<b>Print Servers</b>		PRISMAsync print server
		imagePRESS Server E9000

To view detailed specifications, please consult the Customer Expectations Document.



# Canon

usa.canon.com



Canon and imagePRESS are registered trademarks of Canon Inc. in the United States and may also be registered trademarks or trademarks in other countries. PRISMA and PRISMA product, logo, and service names are registered trademarks of Canon Production Printing Netherlands B.V. All other referenced product names and marks are trademarks of their respective owners. Some printer output images may be simulated. Specifications and availability subject to change without notice. Not responsible for typographical errors.

Federal Law prohibits copying of certain documents. Violators may be subject to penalties. We suggest that you check with your own legal counsel. Canon U.S.A., Inc. and Canon Canada, Inc. intend to cooperate with Law Enforcement Agencies in connection with claims on unauthorized copying.



©2023 Canon U.S.A., Inc. All rights reserved.  
07/23-1680-9000

 **CANON**  
**GENUINE**  
TONER, CARTRIDGE  
& PARTS